



**Petrotec**

# EURO 1000 VI

## STANDARD SPECIFICATIONS

### Construction:

Frame: Galvanised carbon steel; double coated painting

Housing: Stainless steel (AISI 316)

Panels: Aluminium; double coated painting

### Suction pump:

Monoblock, with gas separator and non-return valve

### Meter:

Double-action positive displacement

Volume meter with 4 pistons

Accuracy:  $\pm 0,2\%$

### Filter:

Stainless steel, reusable, 100 $\mu$ m mesh filter easy to clean

### Motor:

Eexd Motor single or three phase, 50/60 Hz with built in thermal protection

### Counter:

Disco (dispenser controller counter) or CI 005

### Protocols:

Petrotec, Pulse Interface, IFSF-LON, ER3, G, Others

### Hose:

5/8", 3/4", and 1" or according to EN 1360 with textile reinforcement

### Nozzle:

Automatic nozzle ZVA slimline

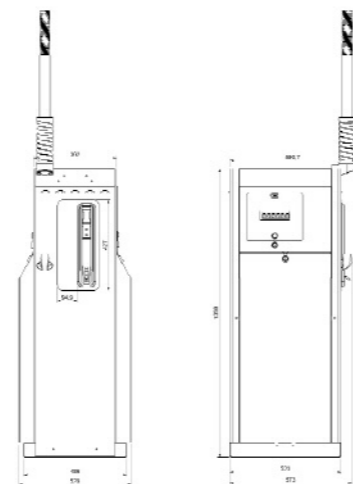
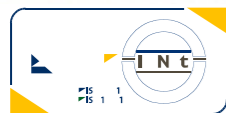
## OPTIONS:

- DISPENSER / SUBMERGE
- 90 OR 130 L/MINUTE FLOW RATE
- SPEED SELECTOR (50/90 L)
- SINGLEPHASE SUPPLY
- VOLUME PRESETTING
- STAINLESS STEEL SPRING MAST
- SIGHT GLASS
- BREAKAWAY IN THE NOZZLE OR HOSE
- COLOUR HOSES AND SLEEVES
- CUSTOMISED PAINTED PANELS
- INTERFACES TO OTHER EQUIPMENT
- SATELLITE
- CIRCUIT BREAKERS IN THE EQUIPMENT
- VAPOUR RECOVERY
- VAPOUR RECOVERY MONITORING SYSTEM
- FLEXIBLE PIPE
- ELECTRONICS HEATER
- TAG READER
- FOUNDATIONS FRAME



## COMMERCIAL LINE EURO 1000 VI

Euro 1000 VI is ideal to individual or fleet use, quick and effective refuelling in 50, 90 or 130 litres per minute versions, in an ultra compact design.



**Weight:**  
50kg to 100Kg

Petrotec is continuously improving its products. Changes on the specifications may occur without prior notice.

PETROTEC MARKETING TEAM 2006

Parque Industrial de Guimarães - Pav. C2, Ponte  
4800-493 Guimarães - Portugal  
P. (+351) 253 479 300 F. (+351) 253 479 318  
isd@petrotec.pt | www.petrotec.pt



MOD. E11000M 3 01\_2006



**Petrotec**

**Petrotec Group**

In one of the most important economy sectors, Petrotec Group is one of its greatest references, due to the fact that it is one of the five largest manufacturers of the world, concerning the production of equipments to the oil industry distribution and retail, and the only one offering global solutions.

It has achieved its status and prestige on its own with no further than two decades of activity. With more than four hundred collaborators and several branches operating in four continents, Petrotec Group has been standing out not only due to its dynamics in a sector which is known by its high competitiveness, but also by the high satisfaction of its clients.

Petrotec Group is proud of belonging, for more than a decade, to the restrict group of manufacturers whose technology is 100 per cent their own, which reflects the technology potential of its research and development departments. It is also important to refer that all the activities are certificated according to the ISO 9001 and ISO 14001 standards.

Petrotec Group's current activity consists of fuel and LPG pumps production, research and development of hardware and software solutions, especially conceived or adapted to each client's specific needs, management and control systems in filling stations, car wash equipments, solutions for garages and maintenance services.

The largest oil companies of the world are some of Petrotec Group's clients, which has brought to it great pride and prestige. The aims are not only to consolidate but mainly to strengthen the already excellent position Petrotec Group occupies in the market. Thus it is trying to enlarge the distribution network as well as to develop partnerships in new markets.

# EURO 1000 VI

In a market whose main characteristics are the extreme competitiveness and demand, excellence is not a mere luxury, but an obligation. It was in this context that the new Petrotec Euro 1000 VI series was born.

Euro 1000 VI was developed to serve private station places. It can easily be adapted to the most recent fleet management systems. It is equipped with one hose.

This wide range of characteristics allows Euro 1000 VI series to have a longer life cycle, and consequently a higher profitability to the business. The internal organs disposition was made aiming the effectiveness, by allowing quick servicing.

However, the highest quality manufacture standards can be also seen on the outside, since the Euro 1000 VI series technology is protected by a hermetic stainless steel outer covering, which guarantees its performance against the hardest environmental conditions.

- Excellent price/quality relation;
- Extraordinary reliability of its components;
- High quality manufacture standards;
- High flow rate levels;
- Modern and attractive ultra compact design.



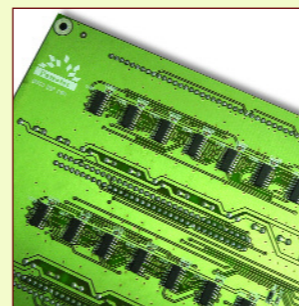
### C1005 or DISCO Counter

The Counter is the electronic heart of VI series commercial line pumps. Due to its modular conception and high industrial technology, it achieves high levels of reliability and flexibility. Through different optional interfaces it allows the connection to a wide range of fleet management terminals.

- Volume presetting 3-key keyboard (optional);
- Electronic and electromechanical totalizer for each hose;
- Flow select functions (optional);
- Satellite (optional).

#### TECHNICAL SPECIFICATIONS

- Numerical LCD Displays, with high contrast 1" digits
- Back-lightened Displays, visible from all angles
- Number of digits**
- Volume: 6 digits



### ELECTRONICS

- Electronics warming with thermostat (optional);
- Ability to operate in stand-alone and/or self-service, connection to fleet management systems.

### SUCTION PUMP

- Monoblock fuel pump developed and produced by Petrotec, "RTF" model, of positive-displacement, high robustness;
- Integrated gas separator;
- Non-return valve integrated in the outlet;
- Bypass adjustable up to 3,5 bar;
- Pump activated by a pulley and Vbelt, temperature and hydrocarbonates proof, as well as by a flame proof motor;
- Tri-phase or single-phase connection, of 50 or 60 Hz;
- Stainless steel reusable 100µm suction filter;
- Ability to prime, with connection to the mechanical installation in 1 1/2" through a 400mm flexible pipe, or rigid pipes in dispenser case.



#### TECHNICAL SPECIFICATIONS

- Maximum flow rate: 50/90/130 L/Minute
- Minimum flow rate: 5 L/Minute
- Pump speed: 900/1470 r.p.m.
- Electric motor: 0.75/2.2 KW (with built in thermal protection)
- Pressure: 1.3/2.1/3 bar

### METER

- Petrotec Meter, PTF25-80 model;
- The most reliable and the safest in the market, with decades of experience and high measuring accuracy, of about ± 0,2%, which is possible only to the 4 pistons meters;
- Positive-displacement meter, which assures, even in great streams, a continuous checking through the years.



#### TECHNICAL SPECIFICATIONS

- Precision: ± 0,2%
- Maximum pressure: 3 bar
- Maximum flow rate: 130 L/Minute
- Minimum flow rate: 2.5 L/Minute
- Volume per revolution: 0.5 L